

**JUNE 2020**

# **Resilient Schools Project Proposal**

**Making our schools safe during  
Covid-19 as we reopen in  
September 2020**

**NATIONAL EDUCATION TRUST LTD.**

A Registered Charitable Organisation.

# Project Fact Sheet

<b>Project Name</b>	<b>Resilient Schools Project</b>
<b>Issue Addressed</b>	<ul style="list-style-type: none"> <li>✓ Satisfy the requirements for the safe opening of school in September 2020</li> <li>✓ Lack of resources to facilitate teaching and learning in a Covid-19 resilient environment</li> <li>✓ Lack of safety equipment</li> <li>Loss of school time due to lack of safety resources to facilitate operations aligned to public health measures</li> </ul>
<b>Thematic Areas of Impact</b>	Education, Health & Safety
<b>Situation to be affected</b>	<ul style="list-style-type: none"> <li>✓ Improvement of the physical plant to implement physical distance and safety measures for the wellbeing of students and staff.</li> <li>✓ Provision of Sanitation and Safety Resources</li> <li>✓ Education and awareness campaign to be implemented</li> </ul>
<b>Impediments</b>	✓ Funding
<b>Solutions</b>	<ul style="list-style-type: none"> <li>✓ Provision of temporary spaces for teaching and learning (tents, desks and chairs)</li> <li>✓ Installation of sanitation stations, hand washing stations and water storage facilities</li> <li>✓ Provision of PPEs, such as face masks, gloves &amp; thermometers</li> <li>✓ Provision of learning resources for students such as laptops, tablets and data plans.</li> </ul>
<b>Direct/ Indirect Beneficiaries</b>	Direct: Students, Teachers and School Administrators Indirect: Parents and the Community
<b>Approach</b>	<ul style="list-style-type: none"> <li>✓ Provide resources to schools to boost safety within school environment, specifically resources identified as critical to align with the personal and public health safety measures issued by the Ministry of Health &amp; Wellness and the World Health Organisation.</li> </ul>
<b>Impact</b>	<ul style="list-style-type: none"> <li>✓ Improved sanitation in schools</li> <li>✓ Access to protective and safety equipment and resources</li> <li>✓ Behaviour modification – COVID-19 safety measures implemented</li> <li>✓ Implementation of safety measures to combat COVID-19</li> </ul>
<b>Schools Targeted</b>	977 Public Schools with approximately 433,114 students
<b>Timeline for Implementation</b>	3 months

# Covid-19 Realty

COVID-19 was designated by the World Health Organization (WHO) as a pandemic on March 10, 2020; exactly one day after Jamaica recorded its first case. The Pandemic has impacted the education sector across the world and in Jamaica schools were closed on March 13, 2020.

According to the United Nations Educational, Scientific and Cultural Organization (UNESCO), 89.5% of the world's students have been impacted by school closures resulting from the spread of COVID -19.

In Jamaica, approximately **600,000** students in approximately 3,639 public and private educational institutions, from the early childhood to the tertiary level of the education system, have been impacted.

The Ministry of Education, Youth and Information (MoEYI) implemented distance learning strategies, including the use of television and radio, to minimise the disruption to teaching and learning during the period of school closure. Despite this effort, at least **30,000** students remain unreached and this poses an unprecedented risk to children's education, protection and wellbeing' (UNICEF). The Statistical Institute of Jamaica, has estimated that 45% of families do not have access to devices or to reliable internet services.

UNICEF (2020) posited that disruptions to instructional time in the classroom can have a severe impact on a child's ability to learn. In addition, the longer marginalized children are out of school, the less likely they are to return. Children from the poorest households are already almost five times more likely to be out of primary school than those from more affluent households. Being out of school also increases the risk of teenage pregnancy, sexual exploitation, violence and other threats.

Further, prolonged closures disrupt essential school-



***COVID-19 HAS EXPOSED SOME INEQUALITIES IN ACCESS TO TOOLS AND CONNECTIVITY IN JAMAICA ACROSS ALL SECTORS.***

based services such as school feeding, mental health and psychosocial support. It promotes antisocial behaviour and can cause stress and anxiety due to the loss of peer interaction and disrupted routines, particularly for vulnerable and unattached youth. The reality is that prolonged school closures will impact students and, in some cases, cause them to regress academically and socially. Further, nothing has been able to truly replace face-to-face interaction with teachers or peers.

Therefore, to mitigate against the risks, the MoEYI is taking the necessary steps to prepare the education system for the full reopening of schools on September 7, 2020. In this regard, the MoEYI has disseminated a series of standards and guidelines designed to help school administrators prepare the facilities for teaching and learning while safeguarding the health and wellbeing of students and staff.

This proposal is focused on assisting schools to prepare for the new academic year in September 2020 under Covid-19 restrictions.



# Project Objective

The objective of this project is to ensure that schools are prepared for reopening in September 2020. This means providing schools with resources to create a Covid-19 resilient environment for the wellbeing of the students and staff.

## Targeted Areas

- **Infrastructure** - ensuring that all the necessary measures needed to maintain safe school operations within established physical distancing guidelines are implemented. This includes the provision of additional classrooms or temporary learning spaces such as tents and gazebos.
  - **Inclusivity**- ensuring that special care is taken to address groups with special needs. This includes ensuring equity in access to ICT- based learning. The provision of assistance, as needed, to all students can be seamlessly integrated into their learning environment and can facilitate greater parental involvement in the activities of the school since they may have much more information to impart regarding the educational needs of their children. To facilitate equity in access to ICT, items such as laptops and tablets are required for an estimated 100,000 PATH students. In addition, education Wi-Fi data plans will be required for teachers and students who may still have to conduct and participate in classes from home.
- Critical to the safe reopening of schools is the ability of the MoEYI and Administrators to ensure that behavioural changes required to reduce the spread of COVID-19 can be effectively implemented in the daily practices of staff and students.

# Methodology & Scope of Work

According to the Caribbean Public Health Agency (CARPHA) and the Ministry of Health and Wellness (MoHW), the following practices will need to be strictly adhered to combat Covid-19:

- Physical/social distancing (specifically, staying 6 feet away from others when in shared spaces);
- Frequent washing of hands or the use of alcohol-based (at least 62 - 70% alcohol) hand sanitizers when hands are not visibly soiled and soap and water are not available;
- Respiratory hygiene - the wearing of clean cloth face masks and avoiding the touching of eyes, nose and mouth;
- Staying home when sick; and
- Robust sanitization practices including the cleaning and disinfecting of frequently touched objects and surfaces.

Based on an assessment, to meet these requirements in schools, the following is required:

## A. Sanitization and Hygiene Practices:

- Liquid soap and safe clean water along with other sanitization devices. This includes garbage bags, disposable (paper) towels and hands-free bins. Hand sanitizers are to be placed in restrooms, classrooms, halls and near exits and entrances where possible.
- Age-appropriate hand washing stations complete with age-appropriate and optimally sited signage on the recommended hand washing technique. At the early childhood level a hand washing station is required to be next to the diaper change area.
- Water storage facilities to be enhanced through the provision of tanks.
- Industrial gloves, coveralls and water boots for staff.
- 70% ethyl alcohol to disinfect small surface areas and equipment or sodium hypochlorite 0.1% for disinfecting larger surfaces.
- Fans to ensure that all areas are adequately ventilated and to increase the circulation of outdoor air. At the early childhood level, the temperature in the classroom must not exceed 30°C / 86°F.
- Covered bins for the collection of waste including used tissues and disposable face masks.
- Masks as per the established protocol by the Government of Jamaica for students and staff.

# Methodology & Scope of Work

Assessed need of the schools continued:

## B. Wellness Management:

- Thermometers to be used at designated entry points to facilitate temperature checks.
- Hand sanitization of staff, students and all other persons who enter the school compound.
- At the early childhood level, clean bed linen is required for sick bays.
- Posters to be erected strategically throughout the facility to enhance health education activities. Emphasis should also be placed on the physical and psychological wellbeing of students and members of staff. General Guidelines to Maintain Social/Physical Distancing.
- Furniture to facilitate seating in classrooms and temporary facilities such as Church Halls, Libraries, Tents etc.

## C. Social Distancing Measures - Classroom Arrangements:

- Laptops and tablets for an estimated 100,000 primarily PATH students, to supplements face to face engagement.
- Smart boards and multi-media projectors to facilitate multi-space teaching.
- Access to additional infrastructure/classroom space as required such as church halls, libraries, tents etc. This is required as there should be no more than 10 or 15 students in any given classroom based on its size. At the early childhood level the teacher-child ratio - children 0 - 12 months old, 1 adult to 5 children; children 13 - 35 months old, 1 adult to 8 children; children 3 - 6 years old, 1 adult to 10 children.

**TOGETHER WE CAN  
OVERCOME!**



# What Can You Do To Help?

National Education Trust Ltd. (NET), in collaboration with the MoEYI and the Early Childhood Commission (ECC) has assessed the needs of schools to implement the protocols and guidelines for the reopening in September 2020.

Accordingly, we are requesting the assistance of your organisation in providing the resources detailed in this proposal.

In particular, we request assistance with, *inter alia*, the following items:

## Personal Protective Equipment (PPEs)

- Installations of hand washing stations/basins;
- Water storage tanks;
- Liquid soap;
- Paper towels;
- Hand sanitizer with at least 60% alcohol content;
- Thermometers;
- Alcohol (70% content);
- Gloves;
- Face shields;
- Bed linen for early childhood institutions; and
- Masks.



**TOGETHER WE CAN  
OVERCOME!**

## ICT Support - Distance Learning Support

- Smartboards
- Laptops
- Tablets
- WiFi Data Plans
- Multimedia Projectors

## Infrastructure

- Classrooms or temporary learning spaces such as tents.

# Justification

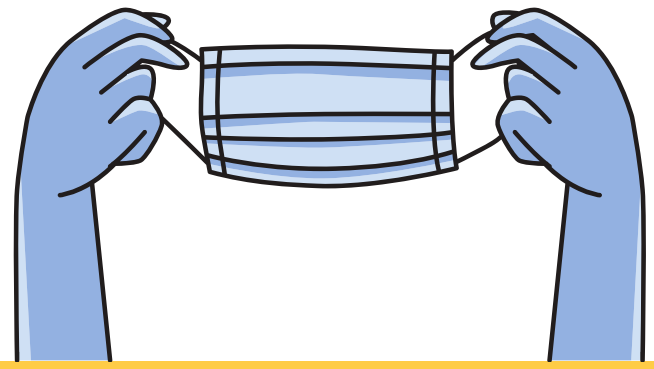
Research has indicated that when children are out of school for prolonged periods, their exposure to physical, emotional and sexual violence increases. For the students most at risk or marginalised, not being able to access school can lead to negative outcomes which last a lifetime.

Children, particularly those living in rural areas, from poorer families or those with special needs rely heavily on the support they receive at schools for meals and other therapeutic services. Accordingly, the risks of schools remaining closed far outweigh the health risks which have been associated with Covid-19.

As such, to assist with creating Resilient Schools, NET has developed this proposal which seeks to provide schools with resources to facilitate safe operations aligned to public health measures for the re-opening of schools in September 2020.

NET, in collaboration with the MoEYI, has assessed the needs of schools for the September 2020 opening. These include, *inter alia*, the following:

- Infrastructure - classrooms or temporary learning spaces such as tents, gazebos etc.
- Technology - laptops and tablets for PATH students in particular. It is estimated that an additional 100,000 devices are required.
- Education Wi-Fi Data Plans - this is for students who may still have to work from home.
- Personal Protective Equipment (PPEs) - this includes the installations of handwashing stations/basins, provision of water storage tanks, liquid soap, paper towels, sanitizer with at least 60 percent alcohol content, thermometers and masks for all schools.



**“Education is the passport to the future, for tomorrow belongs to those who prepare for it today.” – Malcolm X**

- Furniture - some schools, specially at the primary level, require additional furniture as the benches currently being used would not conform to social distancing requirements.
- Education & Awareness Campaign - specifically designed messages targeting the various levels of the education system from early childhood to tertiary.

One cannot deny that there is significant work to be done to increase health safety in schools. This includes, social distancing and handwashing stations.

However, it is even more evident that investments in safety protocols have high yields on investment returns. It was noted that an investment of “...US\$3.35 in handwashing promotion is estimated to deliver the same amount of health benefits as a US\$11 investment in latrine construction, a US\$200 investment in household water supply, or an investment of many thousands of US dollars in immunizations.”

Come September 2020, it will not be business as usual. We require safer and better schools and with your assistance, we can make our schools resilient.



# Execution Plan

## Timeline

It is proposed that the activities be administered over three (3) months to ensure schools are prepared for the start of the new academic year in September 2020.

These activities will be managed and executed by NET, with certain project-related expenses being considered as the counterpart contribution.

## Beneficiaries

The project is expected to directly benefit some **433,114** students in approximately **977** public schools across the island.



## Impact of the Project

Through this project, it is expected that the resources provided will enhance the resilience of schools to cope with an infectious disease such as Covid-19 and flu etc. The immediate effects of the project are as follows:

- Additional class spaces and furniture to facilitate physical distancing.
- Improved sanitation in schools with the installation of handwashing stations and improvement in water storage capacity.
- Access to protective and safety equipment and resources for use in the operations of the schools.

***OUR CHILDREN'S SAFETY  
IS OUR PRIORITY!***

- Behaviour modification - Covid-19 safety measures implemented in the schools and messages translating into action on the part of students and staff.
- Access to teaching/learning equipment to facilitate distance learning modalities.

# Conclusion

Research has indicated that when children are out of school for prolonged periods, their exposure to physical, emotional and sexual violence increases. For the students most at risk or marginalised, not being able to access school can lead to negative outcomes which last a lifetime.

Children, particularly those living in rural areas, from poorer families or those with special needs rely heavily on the support they receive at schools for meals and other therapeutic services. Accordingly, the risks of schools remaining closed far outweigh the health risks which have been associated with Covid-19.

As such, to assist with creating Resilient Schools, the National Education Trust Limited (NET) has developed this proposal which seeks to provide schools with resources to facilitate safe operations aligned to public health measures for the re-opening of schools in September 2020.

We invite you to partner with us as we aim to create resilient schools for the upcoming financial year.

